

This presentation premiered at WaterSmart Innovations

watersmartinnovations.com



Rewards and Responsibilities of Developing and Maintaining a Community Outreach Program: City of Beverly Hills Waterwise / Firewise Mitigation Demonstration Garden.



- Fire Captain Greg Barton
- City of Beverly Hills Fire Department
- 445 North Rexford Drive
- Beverly Hills, CA 90210
- 310.281.2703
- gbarton@beverlyhills.org

City of Beverly Hills

- 36,000 Residents
- 5.69 Square Miles
- Over 250,000 people during the Day
- Rodeo Drive
- Award Shows – Golden Globes
- Wildland/Urban interface area encompasses 1.5 square miles
- Large Estates and Homes
- High Water Usage

Beverly Hills Fire Department

- 25 Firefighters on Duty
- 1 Battalion Chief and Staff Assistant
- 1 Truck Company
- 1 Extra Engine Company on High Hazard Days

- Approximately 6,000 calls per year
- 4 Engine Companies
- 2 ALS Rescues



City of Beverly Hills Wildland Problem

- 1640 Parcels located in Wildland Urban Interface
- Santa Ana Conditions
- Difficulty in Evacuating Residents
- Wood Roofs and Structure Components
- Total valuation of over 3 billion dollars
- Inadequate Fire Resources
- Narrow Roads
- Poor Access to Structures



Water Department

- Beverly Hills joined Metropolitan Water District of Southern California as one of its original cities in December, 1928.
- Service Area
 - Beverly Hills 5.7 square miles
 - Part of West Hollywood .6 square miles.
- Serves approx. 42,000 customers in Beverly Hills and parts of West Hollywood.

Water Department

Water Sources for Service Area

- Local 10%
 - Water Treatment Plant
 - 4 wells
- Metropolitan 90 %



Water Department

- Water Conservation program
 - Public outreach (Flower and Garden Show)
 - Implements programs to promote water use efficiency.
 - Sponsor at Earth Day and Sustainability Forum
 - Approx. 24 personnel

Goals of Water Utility

- Quality
- Reliability
 - City's tap water always delivers
 - Supply
 - Emergency preparedness
- Stewardship
- Efficiency

Water Utility Programs

- New Services and Installations
- Conservation
- Fire Suppression
- Capital Improvement Programs

Firewise Program

- Recognized in 2005
- Mission is to promote communication and education of Firewise principles to motivate community and property owners.
- Objective is to educate, evaluate, and implement a survivable space around all homes in Beverly Hills
- Goal is to reduce the lost of structures and lives during a Wildland/urban interface fire.



Solution

- Fire Department and Water Department working together to develop an unified community outreach program.
- Waterwise/Firewise Mitigation Demonstration Garden at Greystone



Grant Funding for Programs

- Public Funding
 - Grants
 - Local Government
- Private Funding
- Creative Funding
 - Labor
 - Supplies
 - Materials

Waterwise / Firewise Mitigation Demonstration Garden Stakeholders (Partnerships)

- Community of Beverly Hills Firewise Board
- Beverly Hills Fire Department
- City of Beverly Hills OEM
- City of Beverly Hills Public Works
- City of Beverly Hills Recreation and Parks
- Metropolitan Water District
- LACOFD Camp 15
- UCLA Extension Department of Landscape Architecture
- Therma-gel

Waterwise / Firewise Mitigation Demonstration Garden Area Summer, 2005



Waterwise / Firewise Mitigation Demonstration Garden 1st year Fall, 2005

- Private Funding
- Bring other stakeholders into project
- UCLA School of Landscape Architecture
- \$10,000

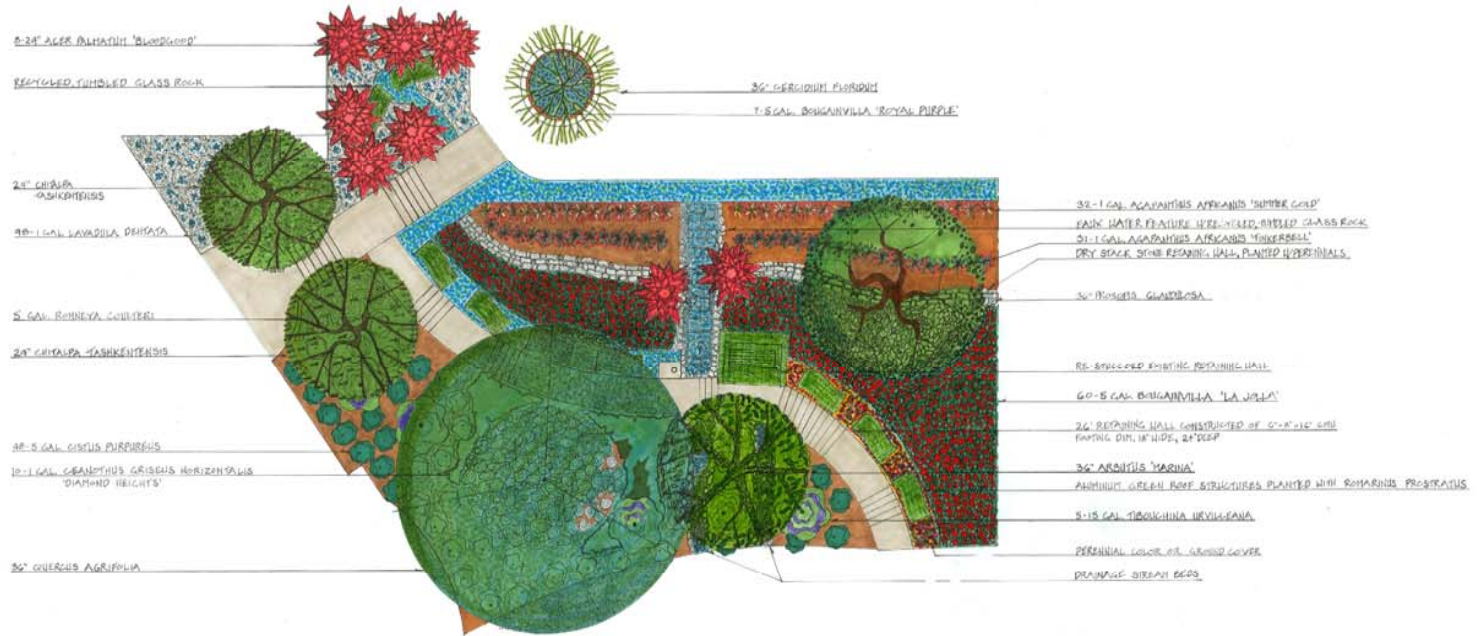


Waterwise / Firewise Mitigation Demonstration Garden as teaching tool – UCLA Graduate Students



Waterwise / Firewise Mitigation Demonstration Garden 1st year. November, 2005





A FIRESAFE & WATERWISE GARDEN
 SPONSORED BY THE CITY OF BEVERLY HILLS, CA



REVISIONS	BY

A FIRESAFE & WATERWISE GARDEN
 DESIGNED & INSTALLED BY JAY RODRIGUEZ ASLA, LIC. LAND ARCH.
 406 LAUREL CONTRACTOR #4797 & 365895

Date	11-20-24
Scale	1/4" = 1'-0"
Drawn	J. RODRIGUEZ

Features of the Garden

- Firewise landscaping design and plants
- Firewise construction information
- Brush Clearance information
- Waterwise information
- Waterwise Plants
- Easy to Maintain
- Waterwise irrigation systems
 - Sprinklers
 - Timers and valves
- Designs have curb appeal and functionality
- Recyclable material
 - Concrete
 - Glass
 - Aluminum
 - Rubber

Waterwise / Firewise Mitigation Demonstration Garden 2nd Year. Summer, 2006



Waterwise / Firewise Mitigation Demonstration Garden 2nd year.





Future Waterwise / Firewise Programs

- Grant funding to develop brochure into 3 different languages (English, Spanish, & Farsi)
- Develop new PSA with local residents
- Develop Interactive Kiosk for Garden and roofing materials
- School trips to Garden and Greystone Mansion
- Evacuation routes signs
- 2 Homeowner Classes
- 2 Contractor Classes
- On-going community education programs

Where We Live. How We Live.

